

IP to IR Command Converter for Velocity Control System AT-VCC-IR3-KIT



The Atlona AT-VCC-IR3-KIT is an accessory for the Atlona Velocity™ Control System that provides conversion from IP control commands to IR. This Velocity Control Converter is very compact and can be placed anywhere a device requires IR control. The VCC-IR3-KIT is remotely powered through Power over Ethernet (PoE), or locally from a USB power source. The primary unit installs onto any surface via a convenient mounting dock. A simple “click” locks it into place for a secure, reliable installation. The IR adapter module includes three IR emitters attached by a 3.5mm cable. Each emitter is independently addressable, allowing discrete IR control of three different AV devices.

Package Contents

- 1 x AT-VCC
- 1 x AT-VCC-IR3

Operating Notes

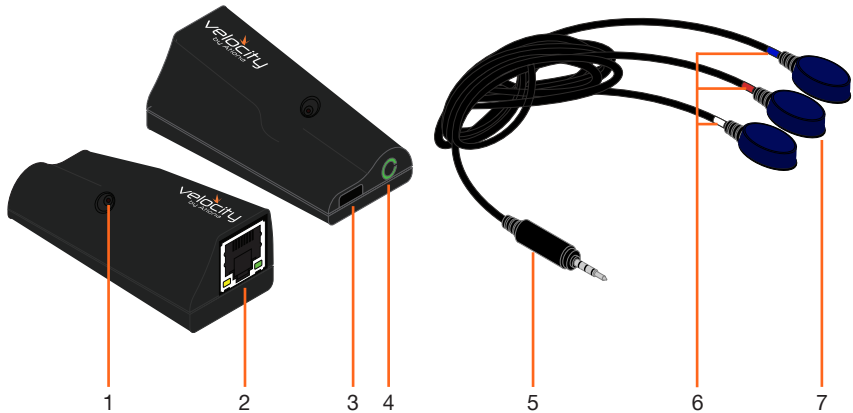
- The Velocity Command Converter must be on the same network as the Velocity Gateway (AT-VGW-HW) or it will be unable to sync for control.
- The AT-VCC-IR3-KIT is PoE, to power the unit, simply plug it into a PoE compatible network switch. If the network switch is not PoE capable, a PoE injector (purchased separately) or USB can be used.
- All devices (AT-VCC, Velocity, AT-VTP, switchers, etc) should be set to static IPs or the DHCP IP address reserved for each individual device.



IMPORTANT: Velocity Gateway (AT-VGW-HW) must be set up before the AT-VCC-IR3-KIT is fully functional.



Panel Description



- 1 IR Window**
Use to learn IR commands from a device's IR remote control.
- 2 Ethernet**
Connect an Ethernet cable from this port to the same network as the Velocity Gateway.
- 3 USB**
Can be used to power the VCC when PoE is unavailable. Requires 5V DC @ 250mA (not supplied).
- 4 3.5mm Port**
Connect the included VCC-IR3 into this port.
- 5 3.5mm Connector**
Connect the 3.5mm connector to the 3.5mm port of the VCC.
- 6 3 x IR Emitters**
Connect up to three 3.5mm IR receivers to the 3-3.5mm ports.
- 7 IR Bands**
Colored bands provide a way to differentiate which emitter goes to which control signal. White is control port 1, red is control port 2, and blue is control port 3.

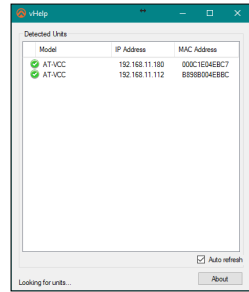
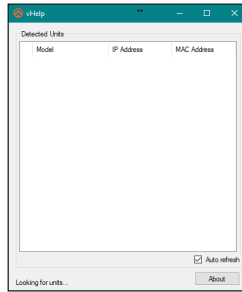
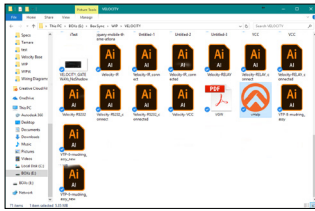
IP

The AT-VCC is set to DHCP by default. If the network does not support DHCP, it will automatically set the AT-VCC to the static IP of **192.168.1.70** after 30 seconds.

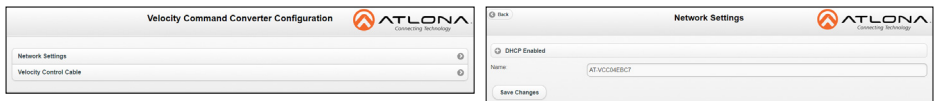
VHelp and webGUI

Velocity will find the VCC when scan network is used, but if the VCC needs to be set up off site first, the software VHelp can be used.

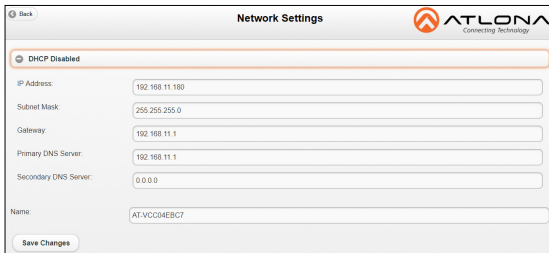
- 1 Connect the IR three emitter cable into the 3.5mm port on the unit.
- 2 Connect the AT-VCC to a network switch (PoE is best if a PoE switch is not available, a power injector or mini USB to USB cable may be used).
- 3 Download VHelp from the resource tab of <https://atlona.com/product/AT-VCC-IR3-KIT>.
- 4 Unzip the file to the local PC
- 5 Double-click the VHelp executable to open the program. Vhelp will start discovery as soon as the program is opened.



- 6 Double click on the VCC (to determine the correct one, look on the bottom of the VCC for the MAC address). The PC default browser will open to the AT-VCC webGUI.



- 7 Select Network Settings to open the IP configuration page.
8 Select the DHCP Enabled header, this will disable DHCP and allows IP settings to be edited.



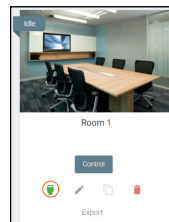
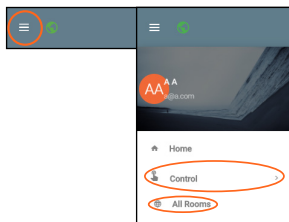
- 9 Type in the IP details to match the network details of the Gateway. e.g. If the Velocity gateway is located at the IP of 192.168.12.15, then the VCC should be set to an IP within the 192.168.12.XXX range that has not already been used.

- 10 Press the Save Changes button.

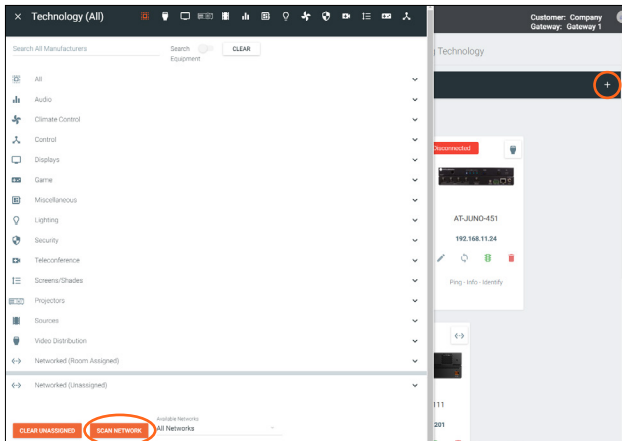


NOTE: Connecting the VCC to Velocity can only be done once Velocity has been set up. View the Velocity Manual for instructions.

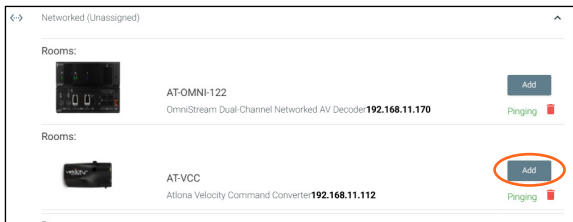
- 11 Open any browser on the network and type in the IP address of Velocity.
12 Log in and select the ≡ button from the top left corner and select **Control**.
13 More options will appear. Select **All Rooms**. A new screen will open.
14 Select the Edit Room Technology button on the room tile. The Modify Technology screen will open.



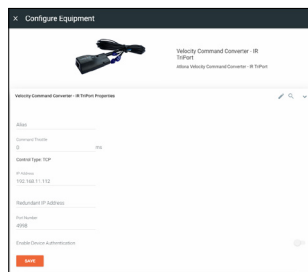
- 15 Select the + button located at the top right corner of the room. A new menu will open.



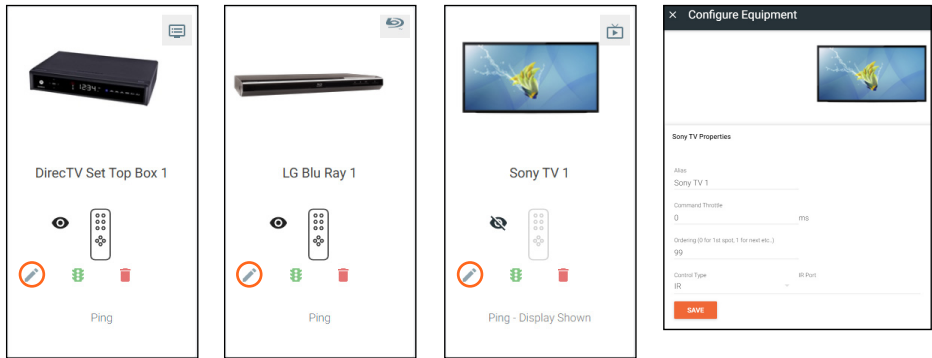
- 16 Press the scan network button. All Atlona devices found will appear in the unassigned list.
- 17 Select the Add button next to the VCC. A new pop up will appear.



- 18 Select the **VCC IR Triport** (based on device/function) from the drop down menu.
- 19 Press the **ADD VCC TO ROOM** button. A VCC tile will appear in the room.

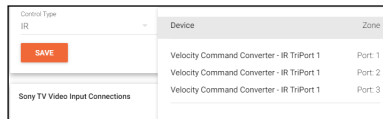


20 Select edit on the controlled device's tile. A new window will slide open.

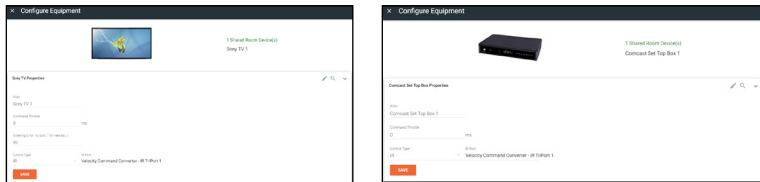


21 ***Optional*** If the device has multiple Control Types, select **IR** from the Control Type drop down menu.

22 Select the VCC from the IR Port drop down menu.



23 ***Optional*** Repeat for up to three devices when using the VCC triport.

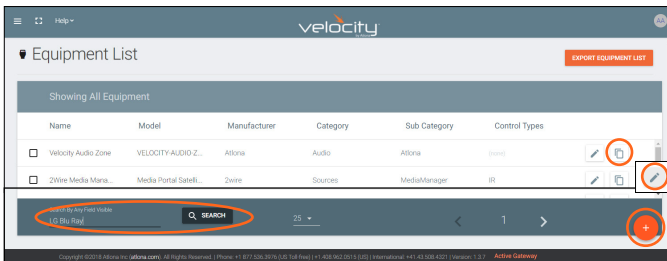
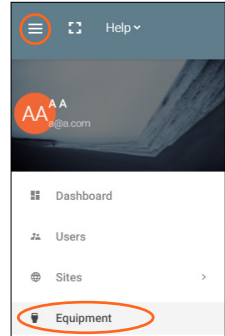


The VCC is ready to use and will pass any commands triggered from the control screen.

IR Learning

The VCC IR has the ability to learn IR codes from a device's IR remote. Create equipment with IR control easier and without manually entering a list of IR command using the IR remote control with the VCC IR.

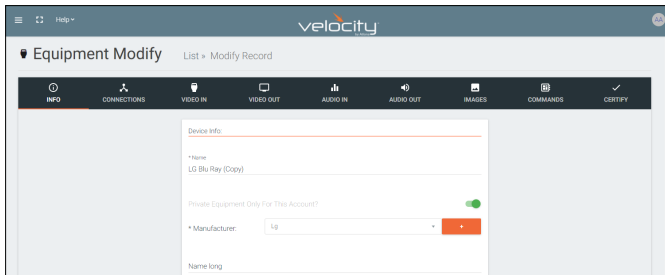
- 1 Open the Equipment List using the left navigation. A new screen will open.
- 2 Create a device to be added to the room. A new screen will open.
 - a Select the + button at the bottom of the page to create a new device.
 - b Search for and duplicate an existing similar driver to be edited.



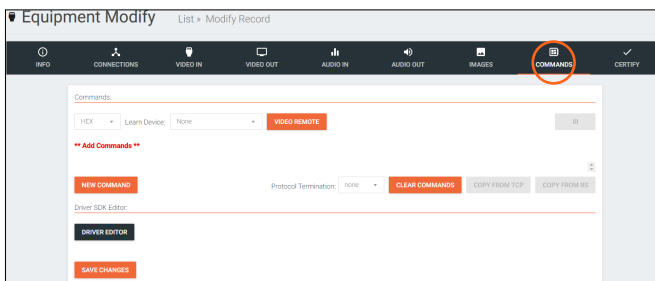
- 3 Fill in the device information (e.g. Name, manufacturer, etc).

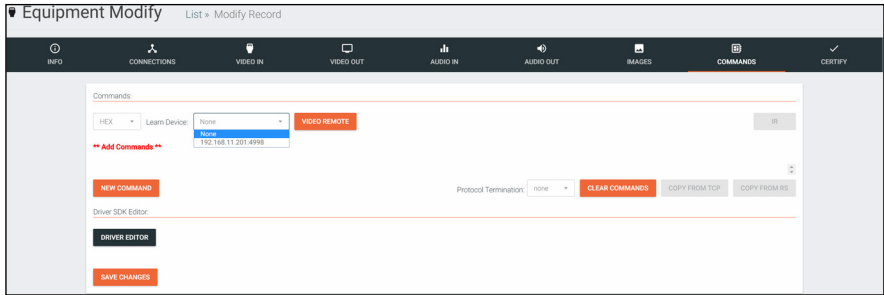


NOTE: If creating a new device the other tabs will need to be filled. Follow the directions within the Equipment section of the Velocity manual.

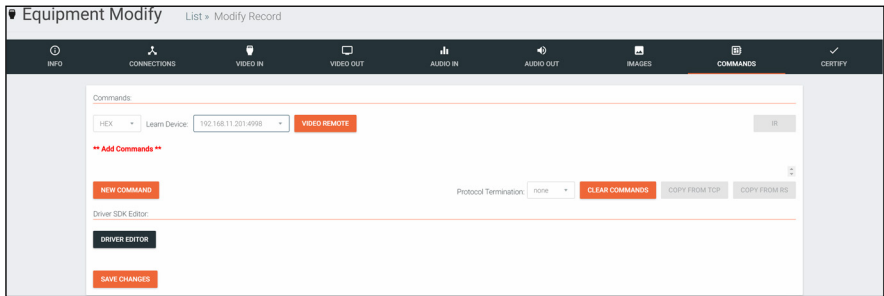


- 11 Select the commands tab from the top navigation.





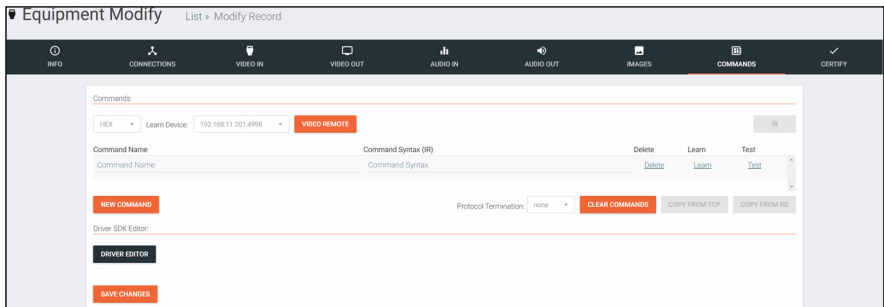
12 Select the IP of the VCC IR from the Learn Device drop down menu.



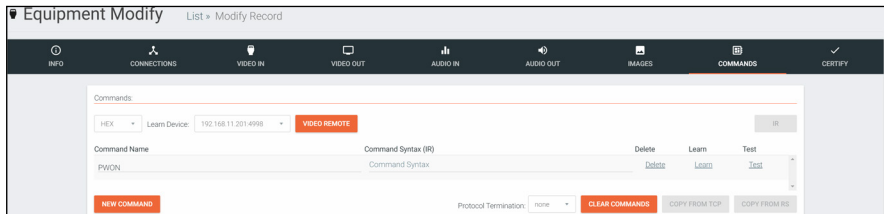
13 Press the NEW COMMAND button. A new line will appear above the button.



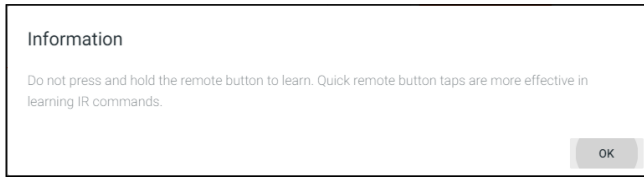
NOTE: If a device was duplicated, remove all the previous commands using the delete link.



14 Fill in the command name of the button to be learned.



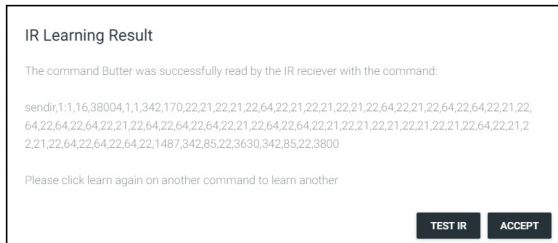
- 15 Select the learn link. An information pop up will appear. Press OK.



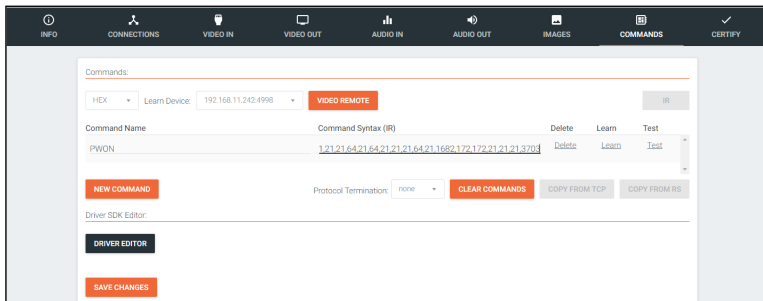
- 16 Point the device's IR remote at the IR learn window located halfway down the VCC and press the button to be learned.

NOTE: Use quick button presses to learn, do not hold the button down.

- 17 When the command is successfully learned, a pop up will appear with the learned IR command.
- Press **ACCEPT** to return to the commands.
 - If there is an IR Emitter connected, press **TEST IR** to broadcast the command to the device to verify the command works. Press **ACCEPT** once done testing.



- 18 The command will appear in the Command Syntax field. Repeat the IR learn process until all needed commands are learned.

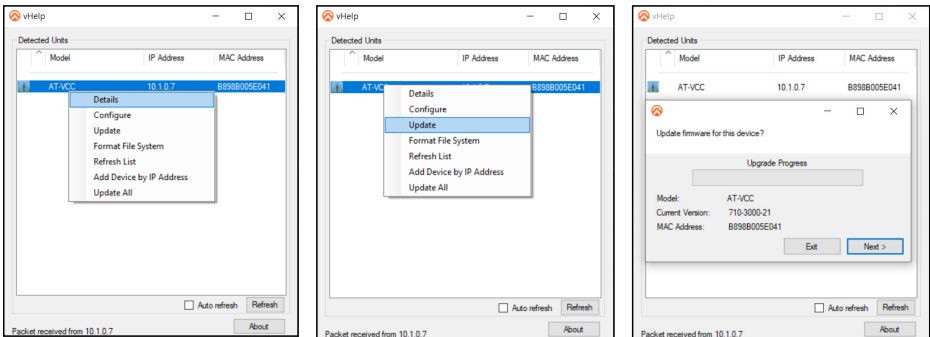


- 19 Press the save changes button.

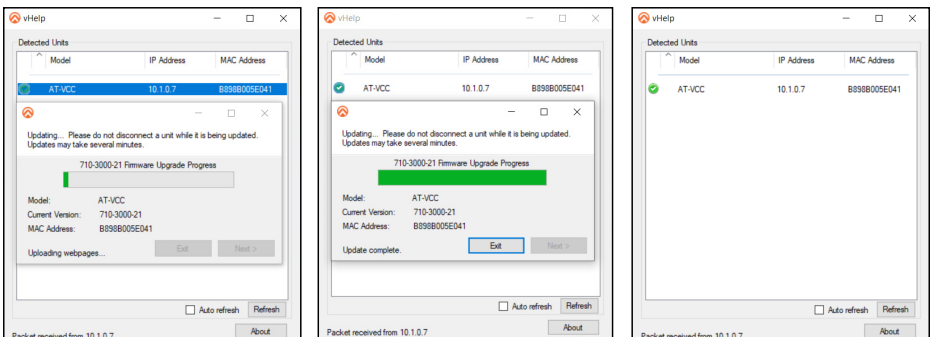
Firmware Update

To update the VCC the most recent vHelp software will be needed. The vHelp has the firmware built into the software and will automatically detect if the VCC is on the most recent firmware.

- 1 Connect the AT-VCC to a network switch (PoE is best if a PoE switch is not available, a power injector or mini USB to USB cable may be used).
- 2 Download VHelp from the resource tab of <https://atlon.com/product/AT-VCC-IR3-KIT>.
- 3 Unzip the file to the local PC
- 4 Double-click the VHelp executable to open the program. Vhelp will start discovery as soon as the program is opened.
- 5 Once the unit is found, if it is out of date an exclamation mark will display next to it. Right click to open the drop down menu.
- 6 Select Update from the drop down list. A new pop up will appear.



- 7 Press the Next button to start the update. The progress bar will cycle through green. This process can take up to 2 minutes.
- 8 Once the update is complete, press Exit. The unit will now show a green check mark next to it to show the unit is up to date.



Atlona, Inc. (“Atlona”) Limited Product Warranty

Coverage

Atlona warrants its products will substantially perform to their published specifications and will be free from defects in materials and workmanship under normal use, conditions and service.

Under its Limited Product Warranty, Atlona, at its sole discretion, will either:

- repair or facilitate the repair of defective products within a reasonable period of time, restore products to their proper operating condition and return defective products free of any charge for necessary parts, labor and shipping.

OR

- replace and return, free of charge, any defective products with direct replacement or with similar products deemed by Atlona to perform substantially the same function as the original products.

OR

- refund the pro-rated value based on the remaining term of the warranty period, not to exceed MSRP, in cases where products are beyond repair and/or no direct or substantially similar replacement products exist.

Repair, replacement or refund of Atlona products is the purchaser’s exclusive remedy and Atlona liability does not extend to any other damages, incidental, consequential or otherwise.

This Limited Product Warranty extends to the original end-user purchaser of Atlona products and is non-transferable to any subsequent purchaser(s) or owner(s) of these products.

Coverage Periods

Atlona Limited Product Warranty Period begins on the date of purchase by the end-purchaser. The date contained on the end-purchaser’s sales or delivery receipt is the proof purchase date.

Limited Product Warranty Terms – New Products

- 10 years from proof of purchase date for hardware/electronics products purchased on or after June 1, 2013.
- 3 years from proof of purchase date for hardware/electronics products purchased before June 1, 2013.
- Lifetime Limited Product Warranty for all cable products.

Limited Product Warranty Terms – Refurbished (B-Stock) Products and Discontinued Products

- 3 years from proof of purchase date for all Refurbished (B-Stock) and Discontinued hardware and electronic products purchased on or after June 1, 2013.

Remedy

Atlona recommends that end-purchasers contact their authorized Atlona dealer or reseller from whom they purchased their products. Atlona can also be contacted directly. Visit www.atlona.com for Atlona’s contact information and hours of operation. Atlona requires that a dated sales or delivery receipt from an authorized dealer, reseller or end-purchaser is provided before Atlona extends its warranty services. Additionally, a return merchandise authorization (RMA) and/or case number, is required to be obtained from Atlona in advance of returns.

Atlona requires that products returned are properly packed, preferably in the original carton, for shipping. Cartons not bearing a return authorization or case number will be refused. Atlona, at its sole discretion, reserves the right to reject any products received without advanced authorization. Authorizations can be requested by calling 1-877-536-3976 (US toll free) or 1-408- 962-0515 (US/international) or via Atlona’s website at www.atlona.com.



Atlona, Inc. (“Atlona”) Limited Product Warranty Cont.

Exclusions

This Limited Product Warranty excludes:

- Damage, deterioration or malfunction caused by any alteration, modification, improper use, neglect, improper packaging or shipping (such claims must be presented to the carrier), lightning, power surges, or other acts of nature.
- Damage, deterioration or malfunction resulting from the installation or removal of this product from any installation, any unauthorized tampering with this product, any repairs attempted by anyone unauthorized by Atlona to make such repairs, or any other cause which does not relate directly to a defect in materials and/or workmanship of this product.
- Equipment enclosures, cables, power supplies, batteries, LCD displays, and any accessories used in conjunction with the product(s).
- Products purchased from unauthorized distributors, dealers, resellers, auction websites and similar unauthorized channels of distribution.

Disclaimers

This Limited Product Warranty does not imply that the electronic components contained within Atlona's products will not become obsolete nor does it imply Atlona products or their electronic components will remain compatible with any other current product, technology or any future products or technologies in which Atlona's products may be used in conjunction with. Atlona, at its sole discretion, reserves the right not to extend its warranty offering in instances arising outside its normal course of business including, but not limited to, damage inflicted to its products from acts of god.

Limitation on Liability

The maximum liability of Atlona under this limited product warranty shall not exceed the original Atlona MSRP for its products. To the maximum extent permitted by law, Atlona is not responsible for the direct, special, incidental or consequential damages resulting from any breach of warranty or condition, or under any other legal theory. Some countries, districts or states do not allow the exclusion or limitation of relief, special, incidental, consequential or indirect damages, or the limitation of liability to specified amounts, so the above limitations or exclusions may not apply to you.

Exclusive Remedy

To the maximum extent permitted by law, this limited product warranty and the remedies set forth above are exclusive and in lieu of all other warranties, remedies and conditions, whether oral or written, express or implied. To the maximum extent permitted by law, Atlona specifically disclaims all implied warranties, including, without limitation, warranties of merchantability and fitness for a particular purpose. If Atlona cannot lawfully disclaim or exclude implied warranties under applicable law, then all implied warranties covering its products including warranties of merchantability and fitness for a particular purpose, shall provide to its products under applicable law. If any product to which this limited warranty applies is a “Consumer Product” under the Magnuson-Moss Warranty Act (15 U.S.C.A. §2301, ET SEQ.) or other applicable law, the foregoing disclaimer of implied warranties shall not apply, and all implied warranties on its products, including warranties of merchantability and fitness for the particular purpose, shall apply as provided under applicable law.

Other Conditions

Atlona's Limited Product Warranty offering gives legal rights, and other rights may apply and vary from country to country or state to state. This limited warranty is void if (i) the label bearing the serial number of products have been removed or defaced, (ii) products are not purchased from an authorized Atlona dealer or reseller. A comprehensive list of Atlona's authorized distributors, dealers and resellers can be found at www.atlona.com.

English Declaration of Conformity

The English version can be found under the resources tab at:

<https://atlona.com/product/at-vcc-ir3-kit/>.



Chinese Declaration of Conformity 中国RoHS合格声明

由SKU列出於:

<https://atlona.com/about-us/china-rohs/>.

